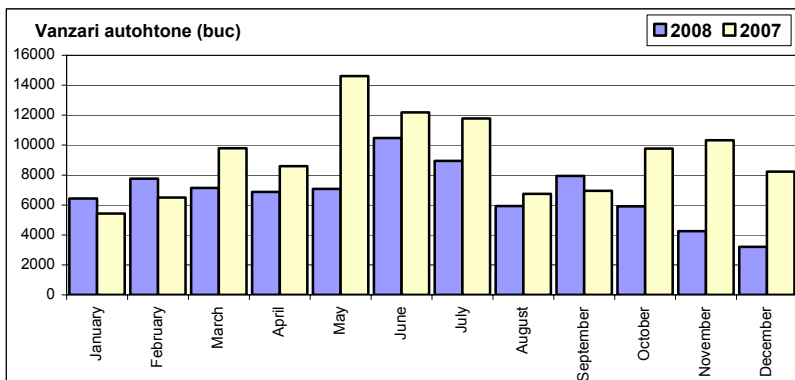


Top vânzări marci automobile - Decembrie 2008

| | Autoturisme | | | | Vehicule comerciale (inclusiv minibusuri și autobuze) | | | | Total | | | |
|--------------|---------------|----------------|---------------|---------------|--|---------------|------------|---------------|---------------|----------------|---------------|---------------|
| | unitati | | cota piata | | < 3.5 t | | > 3.5 t | | unitati | | cota piata | |
| | Dec-08 | Cumul-08 | Dec-08 | Cumul-08 | Dec-08 | Cumul-08 | Dec-08 | Cumul-08 | Dec-08 | Cumul-08 | Dec-08 | Cumul-08 |
| DACIA | 3 211 | 75 241 | 24.6% | 27.8% | 411 | 9 468 | 0 | 0 | 3 622 | 84 709 | 24.0% | 26.1% |
| VOLKSWAGEN | 1 377 | 20 641 | 11.1% | 7.6% | 122 | 2 895 | 27 | 351 | 1 526 | 23 887 | 10.1% | 7.4% |
| HYUNDAI | 1 180 | 13 019 | 9.0% | 4.8% | 1 | 89 | 0 | 0 | 1 181 | 13 108 | 7.8% | 4.0% |
| RENAULT | 826 | 19 328 | 6.3% | 7.1% | 112 | 2 745 | 0 | 0 | 938 | 22 073 | 6.2% | 6.8% |
| SKODA | 752 | 23 064 | 5.8% | 8.5% | 5 | 125 | 0 | 0 | 757 | 23 189 | 5.0% | 7.2% |
| FIAT | 638 | 10 070 | 4.9% | 3.7% | 112 | 5 778 | 0 | 0 | 750 | 15 848 | 5.0% | 4.9% |
| TOYOTA | 640 | 9 063 | 4.9% | 3.3% | 61 | 1 032 | 0 | 0 | 701 | 10 095 | 4.6% | 3.1% |
| FORD | 530 | 17 170 | 4.1% | 6.3% | 124 | 4 969 | 0 | 0 | 654 | 22 139 | 4.3% | 6.8% |
| OPEL | 635 | 16 673 | 4.9% | 6.2% | 16 | 548 | 0 | 0 | 651 | 17 221 | 4.3% | 5.3% |
| PEUGEOT | 441 | 9 955 | 3.4% | 3.7% | 57 | 2 771 | 0 | 0 | 498 | 12 726 | 3.3% | 3.9% |
| MERCEDES | 209 | 2 929 | 1.6% | 1.1% | 89 | 2 355 | 82 | 2 597 | 380 | 7 881 | 2.5% | 2.4% |
| CHEVROLET | 367 | 9 493 | 2.8% | 3.5% | 0 | 0 | 0 | 0 | 367 | 9 493 | 2.4% | 2.9% |
| NISSAN | 196 | 2 704 | 1.5% | 1.0% | 102 | 828 | 0 | 4 | 298 | 3 536 | 2.0% | 1.1% |
| IVECO | 0 | 0 | 0.0% | 0.0% | 171 | 2 719 | 107 | 3 775 | 278 | 6 494 | 1.8% | 2.0% |
| MITSUBISHI | 200 | 3 310 | 1.5% | 1.2% | 65 | 704 | 3 | 99 | 268 | 4 113 | 1.8% | 1.3% |
| KIA | 258 | 8 556 | 2.0% | 3.2% | 0 | 109 | 0 | 0 | 258 | 8 665 | 1.7% | 2.7% |
| AUDI | 235 | 2 856 | 1.8% | 1.1% | 0 | 0 | 0 | 0 | 235 | 2 856 | 1.6% | 0.9% |
| SUZUKI | 211 | 1 425 | 1.6% | 0.5% | 0 | 0 | 0 | 0 | 211 | 1 425 | 1.4% | 0.4% |
| BMW | 199 | 2 446 | 1.5% | 0.9% | 0 | 0 | 0 | 0 | 199 | 2 446 | 1.3% | 0.8% |
| SEAT | 193 | 3 903 | 1.5% | 1.4% | 0 | 0 | 0 | 0 | 193 | 3 903 | 1.3% | 1.2% |
| Rest | 756 | 19 149 | 5.8% | 7.1% | 38 | 1 473 | 337 | 7 651 | 1 131 | 28 273 | 7.5% | 8.7% |
| TOTAL | 13 054 | 270 995 | 100.6% | 100.0% | 1 486 | 38 608 | 556 | 14 477 | 15 096 | 324 080 | 100.0% | 100.0% |

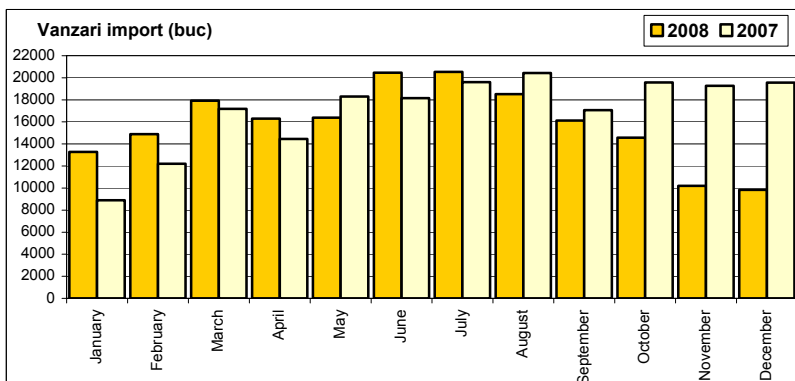
Vanzari autoturisme autohtone

| Luna/An | 2008 | 2007 | Variatie |
|--------------|---------------|----------------|---------------|
| January | 6 429 | 5 429 | 18.4% |
| February | 7 761 | 6 494 | 19.5% |
| March | 7 135 | 9 793 | -27.1% |
| April | 6 872 | 8 591 | -20.0% |
| May | 7 073 | 14 606 | -51.6% |
| June | 10 472 | 12 183 | -14.0% |
| July | 8 951 | 11 782 | -24.0% |
| August | 5 930 | 6 743 | -12.1% |
| September | 7 941 | 6 945 | 14.3% |
| October | 5 912 | 9 774 | -39.5% |
| November | 4 258 | 10 328 | -58.8% |
| December | 3 211 | 8 234 | -61.0% |
| Total | 81 945 | 110 902 | -26.1% |



Vanzari autoturisme import

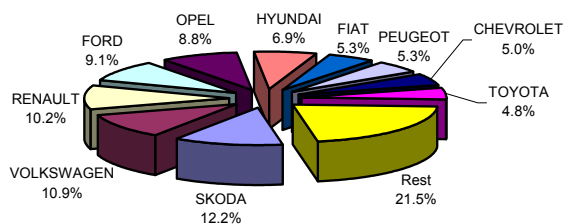
| Luna/An | 2008 | 2007 | Variatie |
|--------------|----------------|----------------|--------------|
| January | 13 283 | 8 897 | 49.3% |
| February | 14 890 | 12 210 | 21.9% |
| March | 17 925 | 17 176 | 4.4% |
| April | 16 299 | 14 453 | 12.8% |
| May | 16 391 | 18 306 | -10.5% |
| June | 20 458 | 18 154 | 12.7% |
| July | 20 541 | 19 611 | 4.7% |
| August | 18 524 | 20 438 | -9.4% |
| September | 16 122 | 17 066 | -5.5% |
| October | 14 566 | 19 573 | -25.6% |
| November | 10 208 | 19 266 | -47.0% |
| December | 9 843 | 19 569 | -49.7% |
| Total | 189 050 | 204 719 | -7.7% |



Top vanzari autoturisme import - marci

| MARCA | Decembrie | | Variație Nov. | | 12 luni 2008 | | Variație 2007 | |
|--------------|-----------|-------------|---------------|--------------|--------------|---------------|---------------|--------------|
| | poziție | unitati | poziție | procent | poziție | unitati | poziție | procent |
| SKODA | 4 | 752 | 4 | ↘ -15.0% | 1 | 23064 | 3 | ↘ -0.3% |
| VOLKSWAGEN | 1 | 1377 | 1 | ↗ 4.5% | 2 | 20641 | 2 | ↘ -11.5% |
| RENAULT | 3 | 826 | 3 | ↘ -16.6% | 3 | 19328 | 1 | ↘ -34.2% |
| FORD | 8 | 530 | 6 | ↘ -20.7% | 4 | 17170 | 5 | ↘ -1.0% |
| OPEL | 7 | 635 | 5 | ↘ -23.4% | 5 | 16673 | 4 | ↘ -13.6% |
| HYUNDAI | 2 | 1180 | 2 | ↗ 7.0% | 6 | 13019 | 8 | ↗ 0.3% |
| FIAT | 6 | 638 | 7 | ↗ 6.0% | 7 | 10070 | 9 | ↗ 3.5% |
| PEUGEOT | 9 | 441 | 12 | ↗ 45.1% | 8 | 9955 | 6 | ↘ -27.4% |
| CHEVROLET | 10 | 367 | 9 | ↘ -21.6% | 9 | 9493 | 7 | ↘ -27.5% |
| TOYOTA | 5 | 640 | 11 | ↗ 77.3% | 10 | 9063 | 10 | ↘ -5.0% |
| Rest | | 2457 | | -8.3% | | 40574 | | 22.3% |
| TOTAL | | 9843 | | -3.6% | | 189050 | | -7.7% |

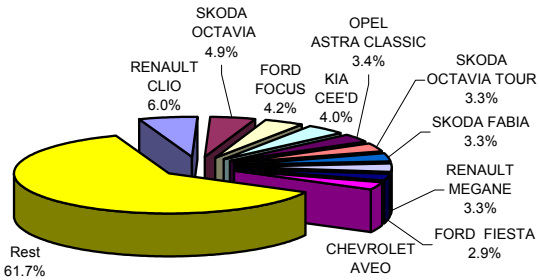
Autoturisme import - marci - 12 luni 2008



Top vanzari autoturisme import - modele

| MODEL | Decembrie | | Variație Nov. | | 12 luni 2008 | | Variație 2007 | |
|--------------------|-----------|-------------|---------------|--------------|--------------|---------------|---------------|--------------|
| | poziție | unitati | poziție | procent | poziție | unitati | poziție | procent |
| RENAULT CLIO | 2 | 420 | 2 | ↘ -29.1% | 1 | 11328 | 1 | ↘ -30.0% |
| SKODA OCTAVIA | 3 | 347 | 6 | ↘ -2.3% | 2 | 9332 | 5 | ↗ 18.1% |
| FORD FOCUS | 6 | 293 | 5 | ↘ -21.2% | 3 | 7910 | 8 | ↗ 17.3% |
| KIA CEE'D | 12 | 221 | 3 | ↘ -54.3% | 4 | 7615 | 24 | ↗ 244.7% |
| OPEL ASTRA CLASSIC | 16 | 194 | 8 | ↘ -39.9% | 5 | 6439 | 3 | ↘ -32.3% |
| SKODA OCTAVIA TOUR | 18 | 178 | 11 | ↘ -27.6% | 6 | 6318 | 9 | ↘ -3.6% |
| SKODA FABIA | 28 | 103 | 16 | ↘ -46.1% | 7 | 6282 | 6 | ↘ -12.3% |
| RENAULT MEGANE | 5 | 325 | 10 | ↗ 11.3% | 8 | 6273 | 2 | ↘ -47.4% |
| FORD FIESTA | 50 | 50 | 43 | ↘ -16.7% | 9 | 5443 | 7 | ↘ -19.9% |
| CHEVROLET AVEO | 8 | 257 | 7 | ↘ -20.9% | 10 | 5378 | 4 | ↘ -34.9% |
| Rest | | 7455 | | 7.0% | | 116732 | | -3.9% |
| TOTAL | | 9843 | | -3.6% | | 189050 | | -7.7% |

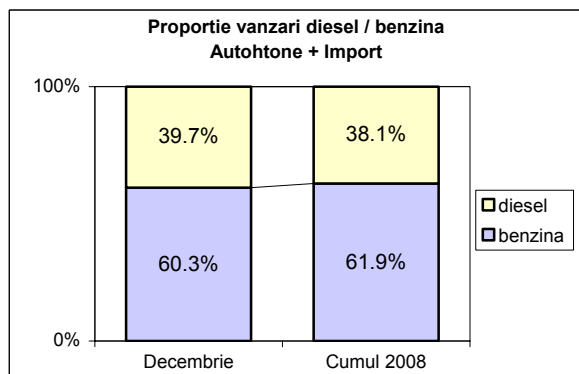
Autoturisme import - modele - 12 luni 2008



Vanzari autoturisme DIESEL

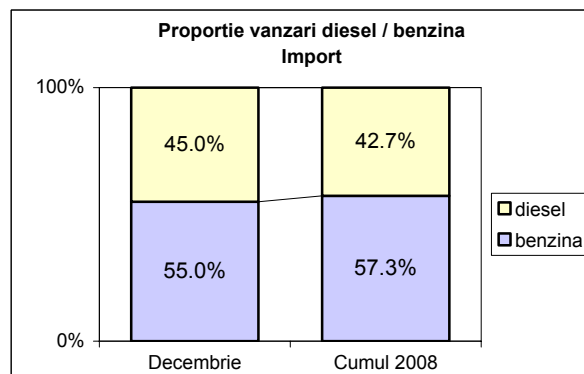
Autohtone + Import

| | benzina | | diesel | | total |
|-------------------|---------|-------|--------|-------|---------|
| Decembrie | 7 869 | 60.3% | 5185 | 39.7% | 13 054 |
| Cumul 2008 | 167 763 | 61.9% | 103232 | 38.1% | 270 995 |



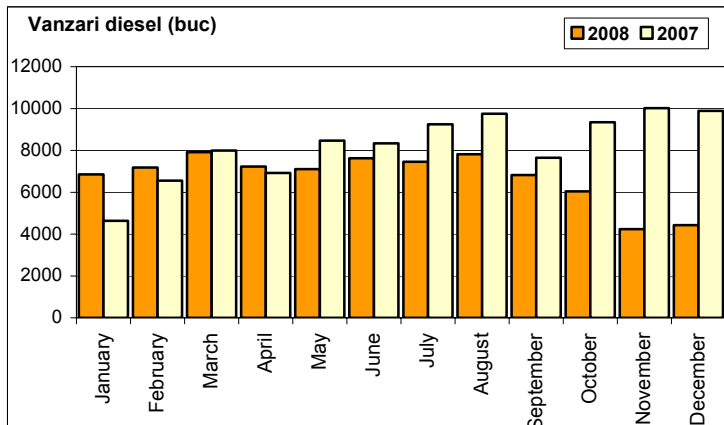
Import

| | benzina | | diesel | | total |
|-------------------|---------|-------|--------|-------|---------|
| Decembrie | 5 415 | 55.0% | 4428 | 45.0% | 9 843 |
| Cumul 2008 | 108 333 | 57.3% | 80717 | 42.7% | 189 050 |



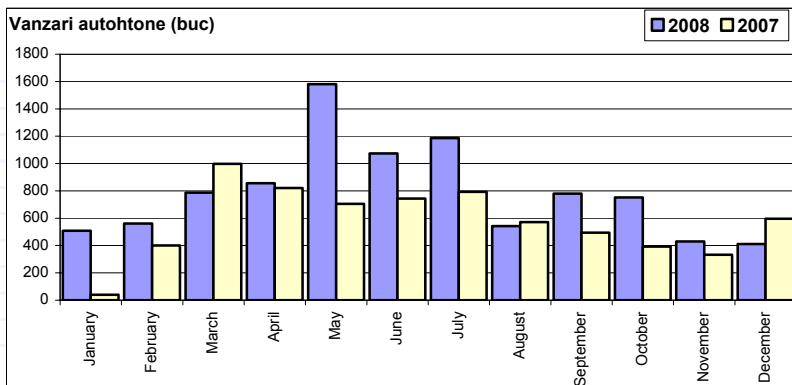
Vanzari autoturisme DIESEL - import

| Luna/An | 2008 | pondere diesel | 2007 | pondere diesel | Variație 08/07 |
|--------------|---------------|----------------|---------------|----------------|----------------|
| January | 6 849 | 51.6% | 4 634 | 52.1% | 47.8% |
| February | 7 180 | 48.2% | 6 556 | 53.7% | 9.5% |
| March | 7 919 | 44.2% | 7 992 | 46.5% | -0.9% |
| April | 7 230 | 44.4% | 6 925 | 47.9% | 4.4% |
| May | 7 108 | 43.4% | 8 469 | 46.3% | -16.1% |
| June | 7 627 | 37.3% | 8 338 | 45.9% | -8.5% |
| July | 7 458 | 36.3% | 9 250 | 47.2% | -19.4% |
| August | 7 818 | 42.2% | 9 752 | 47.7% | -19.8% |
| September | 6 820 | 42.3% | 7 652 | 44.8% | -10.9% |
| October | 6 042 | 41.5% | 9 349 | 47.8% | -35.4% |
| November | 4 238 | 41.5% | 10 022 | 52.0% | -57.7% |
| December | 4 428 | 45.0% | 9 891 | 50.5% | -55.2% |
| Total | 80 717 | 42.7% | 98 830 | 48.3% | -18.3% |



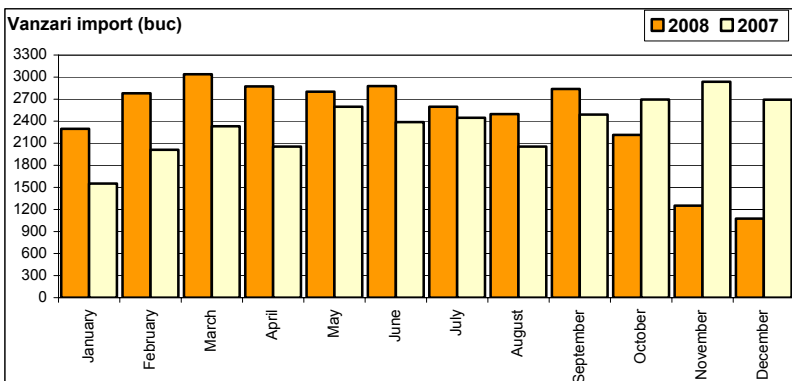
Vanzari comerciale usoare + minibusse autohtone

| Luna/An | 2008 | 2007 | Variatie |
|--------------|--------------|--------------|--------------|
| January | 508 | 40 | 1170.0% |
| February | 561 | 401 | 39.9% |
| March | 787 | 998 | -21.1% |
| April | 856 | 821 | 4.3% |
| May | 1 581 | 705 | 124.3% |
| June | 1 074 | 744 | 44.4% |
| July | 1 186 | 793 | 49.6% |
| August | 542 | 571 | -5.1% |
| September | 780 | 494 | 57.9% |
| October | 752 | 392 | 91.8% |
| November | 430 | 333 | 29.1% |
| December | 411 | 596 | -31.0% |
| Total | 9 468 | 6 888 | 37.5% |



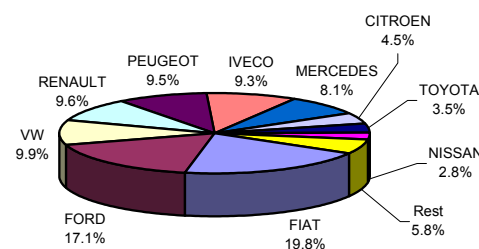
Vanzari comerciale usoare + minibusse import

| Luna/An | 2008 | 2007 | Variatie |
|--------------|---------------|---------------|-------------|
| January | 2 297 | 1 553 | 47.9% |
| February | 2 780 | 2 011 | 38.2% |
| March | 3 038 | 2 331 | 30.3% |
| April | 2 874 | 2 054 | 39.9% |
| May | 2 802 | 2 597 | 7.9% |
| June | 2 878 | 2 387 | 20.6% |
| July | 2 596 | 2 446 | 6.1% |
| August | 2 497 | 2 054 | 21.6% |
| September | 2 838 | 2 491 | 13.9% |
| October | 2 214 | 2 695 | -17.8% |
| November | 1 251 | 2 936 | -57.4% |
| December | 1 075 | 2 693 | -60.1% |
| Total | 29 140 | 28 248 | 3.2% |



Vanzari comerciale <3.5t si minibusse import - marci

| MARCA | Decembrie | | Variație Nov. | | 12 luni 2008 | | Variație 2007 | |
|---------------|-----------|-------------|---------------|---------------|--------------|--------------|---------------|-------------|
| | poziție | unitati | poziție | procent | poziție | unitati | poziție | procent |
| FIAT | 5 | 112 | 1 | ↘ -30.0% | 1 | 5778 | 1 | ↘ -3.6% |
| FORD | 2 | 124 | 2 | ↘ -9.5% | 2 | 4969 | 2 | ↗ 13.1% |
| VOLKSWAGEN | 3 | 122 | 3 | ↘ -5.4% | 3 | 2895 | 6 | ↗ 11.4% |
| RENAULT | 4 | 116 | 6 | → 0.0% | 4 | 2784 | 4 | ↘ -5.0% |
| PEUGEOT | 10 | 57 | 5 | ↘ -52.9% | 5 | 2771 | 3 | ↘ -14.4% |
| IVECO | 1 | 171 | 8 | ↘ 50.0% | 6 | 2719 | 5 | ↗ 0.5% |
| MERCEDES BENZ | 7 | 89 | 9 | ↘ 11.3% | 7 | 2355 | 7 | ↗ 41.0% |
| CITROEN | 11 | 29 | 7 | ↗ -74.8% | 8 | 1314 | 8 | ↗ 2.3% |
| TOYOTA | 9 | 61 | 10 | ↘ -21.8% | 9 | 1032 | 11 | ↗ 36.1% |
| NISSAN | 6 | 102 | 4 | ↗ -17.7% | 10 | 828 | 9 | ↘ -4.1% |
| Rest | | 92 | | 19.5% | | 1695 | | -6.4% |
| TOTAL | | 1075 | | -14.1% | | 29140 | | 3.2% |

Vanzari com <3.5t si minibusse import - marci
- 12 luni 2008

Vanzari comerciale <3.5t si minibusse import - modele

| MODEL | Decembrie | | Variație Nov. | | 12 luni 2008 | | Variație 2007 | |
|---------------------|-----------|-------------|---------------|---------------|--------------|--------------|---------------|-------------|
| | poziție | unitati | poziție | procent | poziție | unitati | poziție | procent |
| FORD TRANSIT | 2 | 102 | 3 | ↘ -7.3% | 1 | 4303 | 1 | ↗ 15.4% |
| FIAT DUCATO | 10 | 39 | 7 | ↘ -47.3% | 2 | 2607 | 2 | ↘ -2.7% |
| IVECO DAILY | 1 | 166 | 2 | ↗ 46.9% | 3 | 2585 | 3 | ↗ 2.0% |
| PEUGEOT BOXER | 9 | 42 | 5 | ↘ -47.5% | 4 | 1997 | 5 | ↘ -11.3% |
| FIAT DOBLO CARGO | 7 | 54 | 8 | ↘ -19.4% | 5 | 1923 | 4 | ↘ -21.7% |
| RENAULT MASTER | 8 | 50 | 11 | → 0.0% | 6 | 1546 | 6 | ↘ -10.0% |
| MERCEDES BENZ SPRIN | 5 | 60 | 9 | ↗ 3.4% | 7 | 1539 | 7 | ↗ 22.7% |
| CITROEN JUMPER | 16 | 22 | 4 | ↘ -75.3% | 8 | 1044 | 8 | ↗ 8.0% |
| TOYOTA HI-LUX | 6 | 58 | 6 | ↘ -24.7% | 9 | 998 | 11 | ↗ 37.1% |
| VOLKSWAGEN TRANSPC | 12 | 30 | 10 | ↘ -45.5% | 10 | 847 | 12 | ↗ 16.8% |
| Rest | | 452 | | -41.0% | | 9751 | | 22.2% |
| TOTAL | | 1075 | | -14.1% | | 29140 | | 3.2% |

Vanzari com <3.5t si minibusse import - modele
- 12 luni 2008